



# Nighttime closures of Highway 17, 112/111a Avenue, Bridge Road, and Musqueam Drive

August 21, 2023

Starting the week of August 28, FCP will begin construction of the new bridge deck in Surrey. Crews will lift steel girders across Highway 17 just east of the existing Pattullo Bridge.

While this work is underway, nighttime closures of Highway 17 in both directions between 9 p.m. and 5 a.m. will be required for approximately three weeks. Closures are being implemented at night to minimize disruption to traffic. Closures will not be required every night and will be intermittent throughout the three-week period. Road signage will be used to indicate nights when the closures are required.

Detour routes will be clearly marked and are as follows (shown on page two):

- **Highway 17 westbound** – drivers will be detoured at Bridgeview Drive to King George Boulevard, 120 Street, and Tannery Road to continue westbound travel.
- **Highway 17 eastbound** – drivers will be detoured at Tannery Road to 120 Street, King George Boulevard, and will access Highway 17 eastbound via Bridgeview Drive.

During girder lifts over the westbound lanes (between Bridge Road and the foundation in the Highway 17 centre median), nighttime full closures of Highway 17, Bridge Road, and Musqueam Drive will be required.

During girder lifts over the eastbound lanes, nighttime full closures of Highway 17, 112 Avenue, and 111a Avenue will be required.

As the girders are lifted into place, crews will bolt them into place to ensure they are safely secured over the roadway. Nearby businesses and residents may hear this bolting while it is underway.

Drivers can expect delays and are reminded to observe signage, traffic control personnel and the construction zone speed limit. Please check [www.DriveBC.ca](http://www.DriveBC.ca) for updates. Access for emergency responders and cyclists will not be maintained and will need to follow the detour routes.

*Closure area and detour routes shown on the graphic on page two.*

## Contact the Project



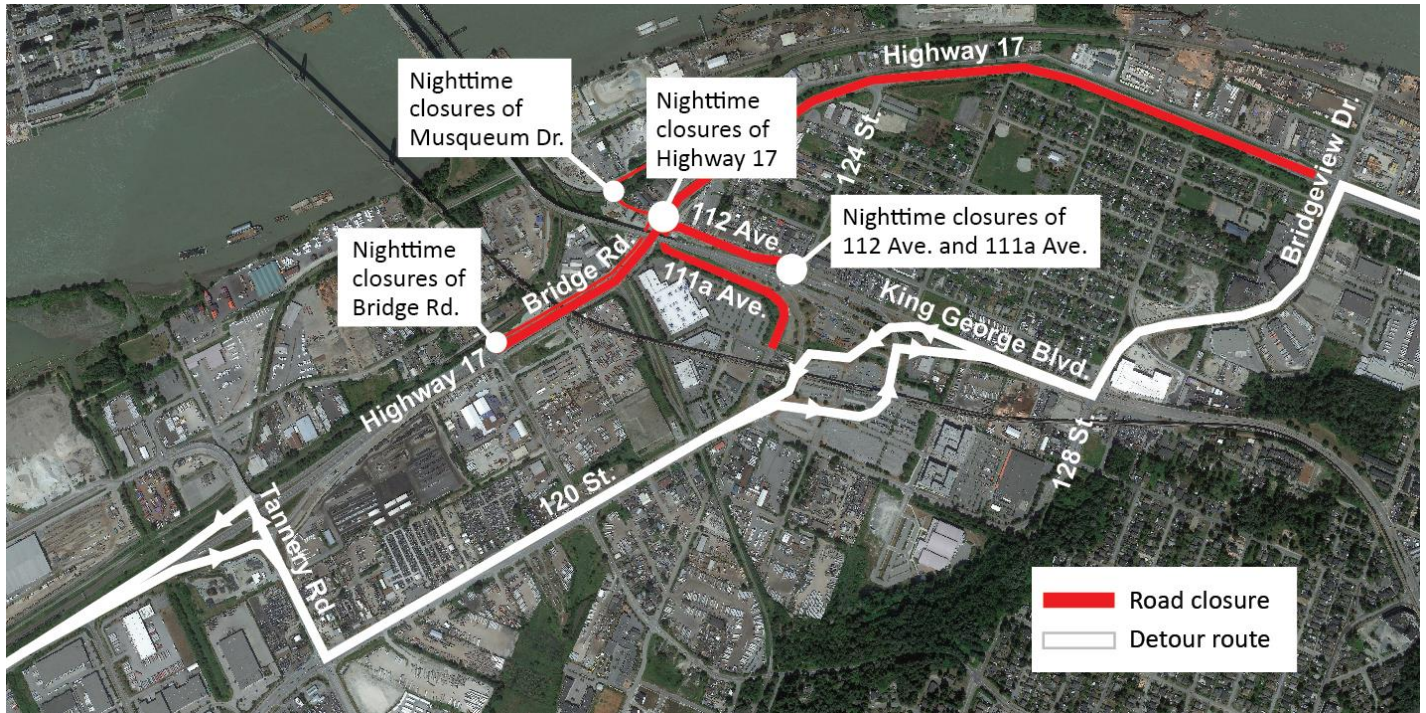
24/7 Phone Line  
1-844-815-6149



Project Information  
[pattullobridgereplacement.ca](http://pattullobridgereplacement.ca)  
[pattullobridgereplacement@gov.bc.ca](mailto:pattullobridgereplacement@gov.bc.ca)



Work on the Project  
[bcib.ca](http://bcib.ca)  
[info@bcib.ca](mailto:info@bcib.ca)



## What to Expect



### Timing

Starting the week of August 28 and continuing for approximately three weeks. Nighttime closures will not be required every night. Watch for signage indicating when closures will be in place.



### Hours of Work

When required, closures will be implemented on Highway 17 between 9 p.m. and 5 a.m. Closures on 112/111a Avenue, Bridge Road, and Musqueam Drive will be in place between 7 p.m. and 5 a.m.



### Traffic

Highway 17 drivers will be detoured at Tannery Road and Bridgeview Drive. Traffic control personnel will be on site to direct traffic when stoppages are required. All traffic pattern changes and detour routes will be well signed.



### Impacts/Interruptions

Temporary nighttime closures of Highway 17 in both directions between Bridgeview Drive and Tannery Road. Drivers may experience longer than normal travel times due to the detours. Nearby residents may hear some noise associated with bolting the girders into place.

We appreciate your patience while this work is underway. If you have any questions, please email [info@fcgp.ca](mailto:info@fcgp.ca) or call the 24/7 phone line: 1-844-815-6149.

For more information about the Project, please visit [pattullobridgereplacement.ca](http://pattullobridgereplacement.ca).

## Contact the Project



24/7 Phone Line  
1-844-815-6149



Project Information  
[pattullobridgereplacement.ca](http://pattullobridgereplacement.ca)  
[pattullobridgeproject@gov.bc.ca](mailto:pattullobridgeproject@gov.bc.ca)



Work on the Project  
[bcib.ca](http://bcib.ca)  
[info@bcib.ca](mailto:info@bcib.ca)