



## PATTULLO BRIDGE REPLACEMENT

# Project Overview

Meeting with Quayside Community Board  
February 23, 2022



transportation  
investment  
corporation



# Agenda

- Project overview
- Bridge connections in New Westminster and Surrey
- Urban integration
- Construction update
- Contact the Project
- Discussion



# Bridge design





# A safer and more reliable crossing



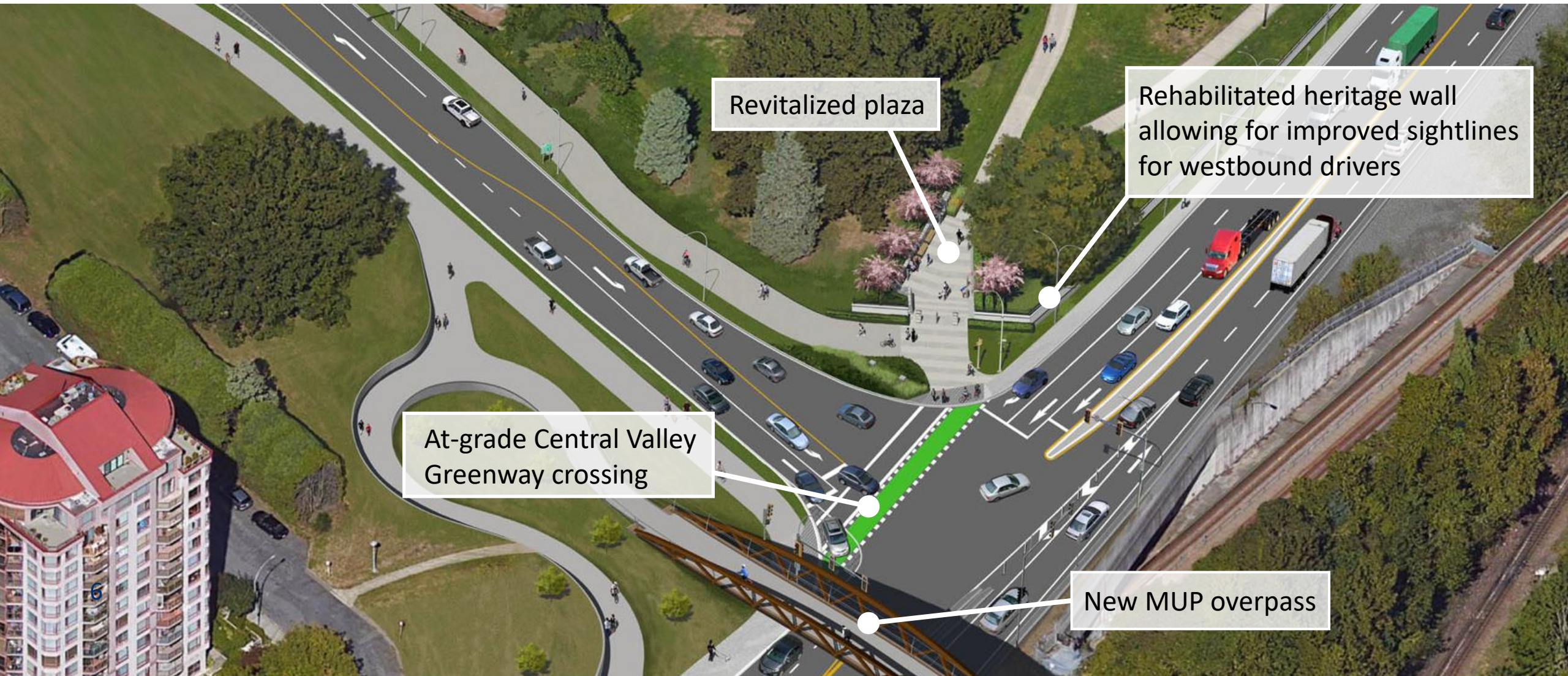


# Connections in New Westminster





# A safer intersection at McBride Boulevard and East Columbia Street



Revitalized plaza

Rehabilitated heritage wall allowing for improved sightlines for westbound drivers

At-grade Central Valley Greenway crossing

New MUP overpass

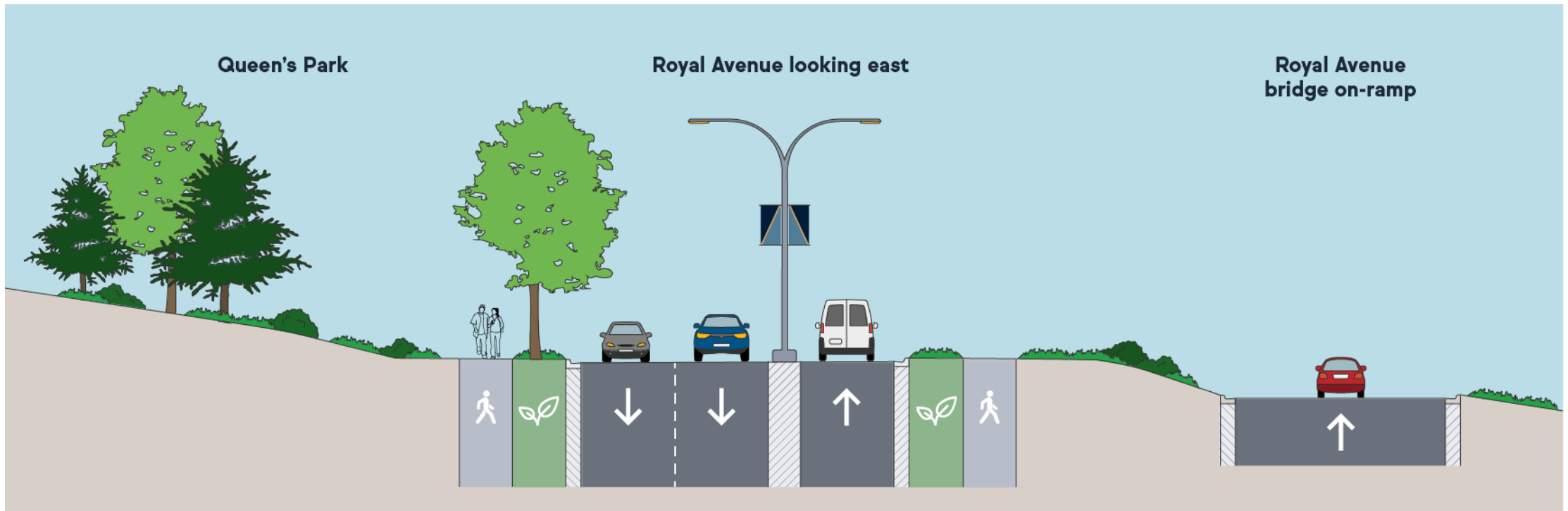


# Connections in Surrey



# Urban integration

Many urban design features are being incorporated, including boulevards, landscaping, street furniture, and wayfinding





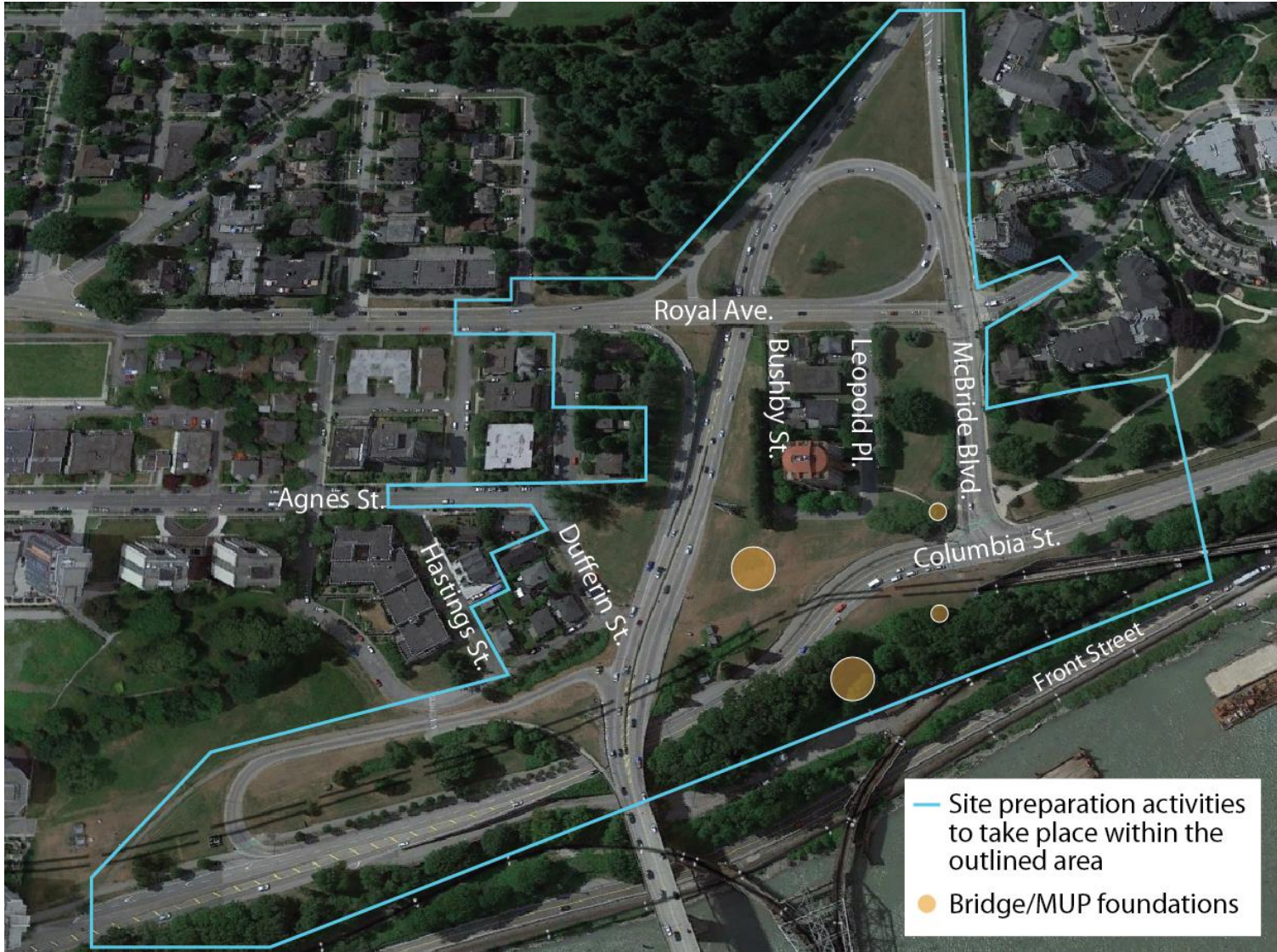
# Construction update – February 2022

- In-river pile driving on the main bridge tower is complete – crews are now working on the pile caps
- In-river pile driving on the second foundation will begin this summer
- On-land foundation work is ongoing in Surrey and New Westminister
- Site preparation work in New Westminister is ongoing





# Work activities in New Westminster





# Bridge foundation construction in New Westminster – drilled shafts

- Install temporary casing (approx. 5-10 metres in length)
- Use auger drill to get to required depth (25 – 30 metres)
- Insert reinforced steel into augured hole
- Fill with concrete





# Mitigation measures

## Noise Management

- Drilled-shaft methodology used instead of hammer pile driving for on-land bridge foundations in New Westminster
- Noise barriers
- Work will be done during the daytime as much as possible

## Air quality management

- Ongoing dust control measures
- Anti-idling policy for equipment and vehicles



# Other upcoming work in New Westminster

- In-river bridge foundation (closest to New Westminster)
- Royal Avenue overpass – spring/summer 2022
- Intersection improvements at McBride Boulevard-East Columbia Street – spring 2022
- Utility relocation – summer 2022





# Front Street closures

- Full closures and detours will be required
- Closure between Begbie Street and East Columbia Street
- A comprehensive traffic management and communications plan will be in place
  - Local and regional signage plan
  - Communication with local and regional stakeholders
  - Communication with residents, resident associations, and road users
- Traffic control personnel will assist with pedestrian and cyclist movements at the McBride Boulevard-Royal Avenue intersection during peak hours



# Contact the Project



24/7 phone line: 1-844-815-6149



[pattullobridgereplacement.ca](http://pattullobridgereplacement.ca)  
[info@fcgp.ca](mailto:info@fcgp.ca)



Work on the project: [bcib.ca](http://bcib.ca)

# Questions

